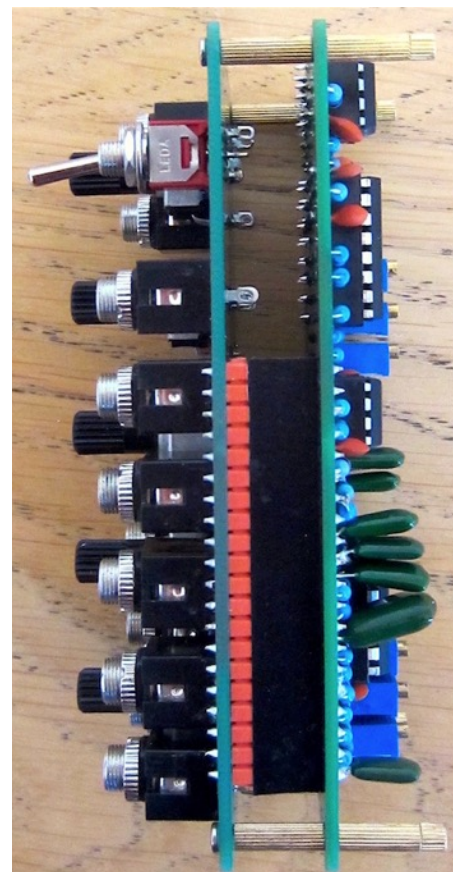


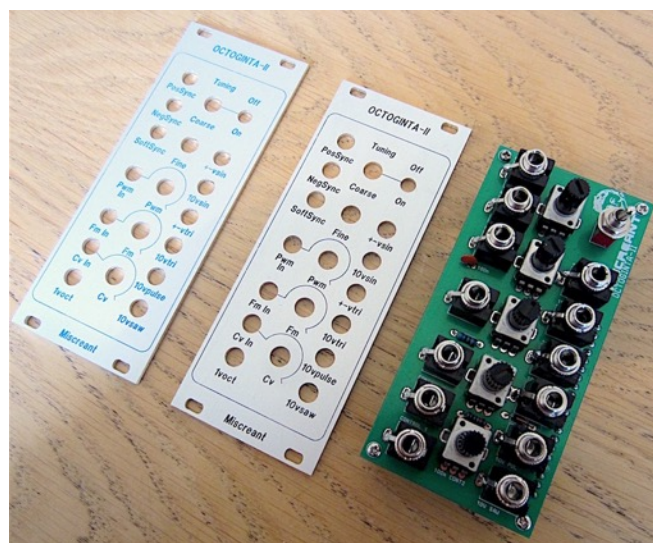
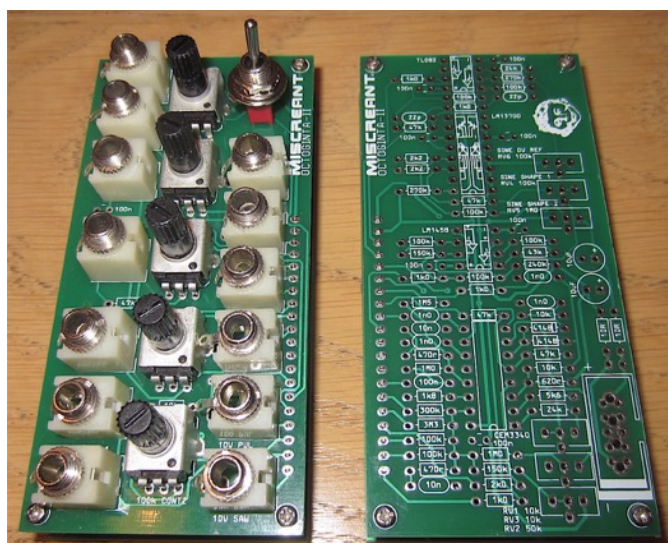
OCTOGINTA-II – The Digisound 80-2 CEM3340 VCO clone from

MISCREANT



PCB

The PCB is available through whoop@jsdesign.co.uk or julian at <http://thebeast.co.uk>



Front panel

A very high-quality engraved aluminium panel is available from Julian at <http://thebeast.co.uk>. Julian offers the PCB and front panel together, to save on your shipping.

Semiconductors

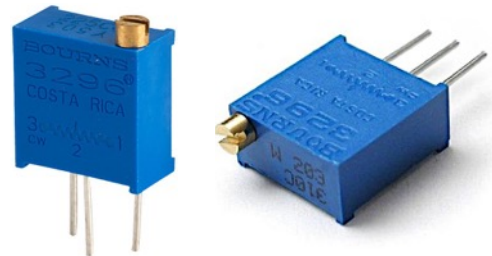
1	VCO IC	CEM3340 or clone 3340 - various sources
1	Trans. op amp	LM13700
1	Op amp	LM1458
1	Op amp	TL082
1	Zener Diode	10v - not really necessary on 12v euro supply
2	Signal Diode	1N4148 or similar

Capacitors

2	Electrolytic	10uF
8	Ceramic	100n
1	Poly cap	100n
2	Polycap	10n
4	Polycap	1n0
2	Polycap	22p

Resistors

2	Resistor 1/4w	10r
8	Resistor 1/8w	100k
3	Resistor 1/8w	10k
2	Resistor 1/8w	150k
2	Resistor 1/8w	1M0
1	Resistor 1/8w	1M5
5	Resistor 1/8w	1k0
1	Resistor 1/8w	1k8
1	Resistor 1/8w	240k
2	Resistor 1/8w	24k
2	Resistor 1/8w	270k
1	Resistor 1/8w	2k0
2	Resistor 1/8w	2k2
1	Resistor 1/8w	300k
1	Resistor 1/8w	3M3
1	Resistor 1/8w	43k
2	Resistor 1/8w	470r
5	Resistor 1/8w	47k
1	Resistor 1/8w	5k6
1	Resistor 1/8w	620r
2	Preset pot	10k
1	Preset pot	50k
2	Preset pot	100k
1	Preset pot	1M0
5	Potentiometer 9mm	100k



Offset middle leg or inline versions will fit
 Offset middle leg or inline versions will fit
 Offset middle leg or inline versions will fit
 Offset middle leg or inline versions will fit
 Offset middle leg or inline versions will fit
 Alpha metal or plastic shaft (Tayda etc) or RV09 series

Tayda:



RV09:

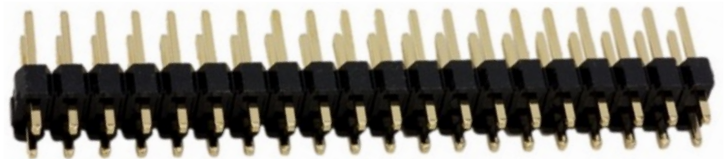
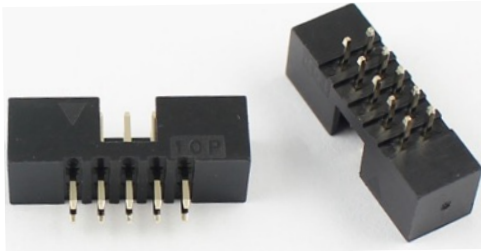


Hardware

- 13 3.5mm mono jacks, Thonkicon or the more common tag versions are OK



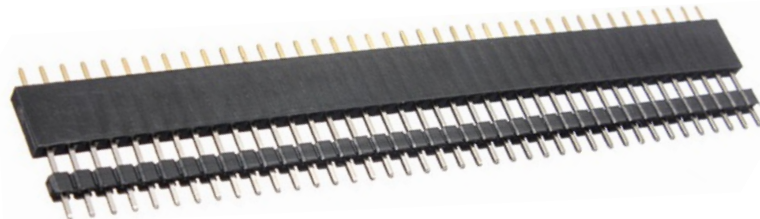
- 1 10 pin Eurorack box header or DIL strip (4 pin MOTM holes also provided)



- 4 M2 x 11mm female to female standoffs - ebay, aliexpress etc.



- 8 M2 x 5mm screws for above
1 20 way SIL strip male for connecting PCBs - usually comes in 40 pin strips
1 20 way SIL strip female for connecting PCBs - usually comes in 40 pin strips



- 1 The combined height of headers should be 11mm when connected
Subminiature On/On toggle switch - search for SMTS-102. Caution - these are smaller than most common small switches.

